

# THE PITT RIVERS MUSEUM

## TRAIL FOR INTERNATIONAL STUDENTS

Please note that we cannot guarantee access to all areas of the Museum

### I. DESCRIPTIONS QUIZ

- Connect the picture to the correct description. Write one more sentence about each object.



- o It was made in Britain. It is made from recycled material. It moves when money is put into it.

---

---



- o It was made in Canada. It is very tall. It is covered with animals and has some hats on top. Look up to see it.

---

---



- o It was made in Africa. It has two eyes at the front. It has a large sail. Look up to see it.

---

---



- o It was made in America. It is worn in cold places. It is made from animal skin. It is at the back of the Museum.

---

---



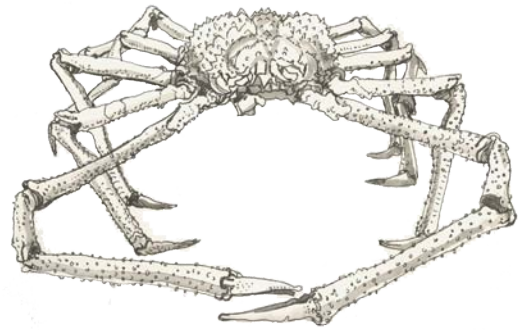
- o It was made in Egypt. It is part of a mummy case. It is at the side of the Museum.

---

---



# THE OXFORD UNIVERSITY MUSEUM OF NATURAL HISTORY TRAIL FOR INTERNATIONAL STUDENTS



## MUSEUM MISTAKES

There is one **grammatical mistake** and one **false statement about the animal**. Find the animal and write the correct version in the boxes below.

**On the left of the main court.** The elephant bird egg is more big than the ostrich egg. Ostriches have 5 toes and run very fast.

**In the middle of the main court.** The dodo is very famous. It had a large body and could fly. Many visitors come because they like look at the dodo.

**Upstairs on the right.** Did you saw the cockroaches? There are singing cockroaches and burrowing cockroaches in the display.

## WHERE ARE THEY?

Go to the reptiles on the left hand side of the centre. Chose from the words in the box below to complete the sentences.

OPPOSITE

UNDER

ABOVE

NEXT TO

IN FRONT OF

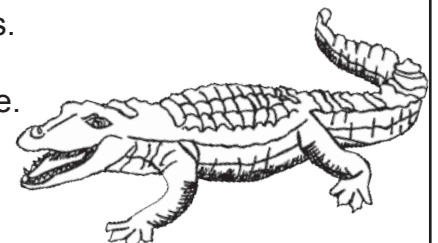
BEHIND

UNDERNEATH

The african crocodile is \_\_\_\_\_ the other crocodiles.

The giant land turtle is \_\_\_\_\_ the leatherback turtle.

The sidewinder snake is \_\_\_\_\_ the coral snake.





## SPECIMEN COMPARISONS

Find the specimens then use the words in the box below to complete the sentences.

TALLER

BIGGER

SMOOTHER

OLDER

HAIRIER

SMALLER

**Go to the 'Passerines' bird case.** The hill mynah is \_\_\_\_\_ than the flame robin.

**Go to the skeletons on the left.** The giraffe is \_\_\_\_\_ than the horse.

**Go to the 'Primates' on the far left.** The titi monkey is \_\_\_\_\_ than the common chimpanzee.

**Can you see the large minerals in the centre of the museum?** The orbicular granite is \_\_\_\_\_ than the stromatolite.

**Go upstairs and find the model of a bluebottle fly.** The bluebottle fly is \_\_\_\_\_ than the daddy-long-legs.

## DESCRIPTIONS

Find a partner. Chose a specimen in a case and describe it to your partner without saying its name.

Can they guess what you are describing?

Now swap roles.

Write down correct guesses in the box below.

