



SETTLERS

Genetics, geography and the peopling of Britain

9 February - 16 September 2018

Exhibition event programme

Join us for talks, workshops, trails, games and lots more to explore the research and themes in the Settlers exhibition.

www.oum.ox.ac.uk/settlers



Sat 17 Feb, 2.30-3pm

Settlers Spotlight

Find out about the latest research in an afternoon talk based on themes explored in the Settlers exhibition.

Thu 22 Feb, 6.30-7.30pm

People and Places, Brexit and Britain: the importance of Immigration and Empire

Professor Danny Dorling discusses the role of the British Empire in shaping today's map of ethnic identity in Britain, and contemporary attitudes to immigration, emigration and Brexit.

Book at: www.bit.ly/mnhevents

Thu 1 Mar, 6.30-7.30pm

Darwin's Fuegian Lice: From Dust to DNA

Museum researcher Dr Charlotte Inchley tells us how an historic collection of parasites collected by Charles Darwin during the Beagle voyage is being used to understand how extinct tribes fit into the migratory story of the Americas.

Book at: www.bit.ly/mnhevents

Sat 10 Mar, 12-4pm, Drop-in

Super Science Saturday: People & Planet

Join University researchers at our big science bonanza to learn all about Earth and the people that live on it.

Tue 13 Mar, 6.30-7.30pm

The 'Red Lady' of Paviland: New Science for Britain's Oldest Human Burial

Professor Tom Higham reveals new insights about the 'Red Lady's' significance as one of the earliest burials of the Mid-Upper Palaeolithic period.

Book at: www.bit.ly/mnhevents

Sat 17 Mar, 9.30am-5pm

A Question of Taste

Extract your own DNA in our lab to search for the gene that makes you a sprout-hater or sprout-lover, and discover its evolutionary importance. **£50**

Book at: www.bit.ly/mnh tickets

Sat 17 Mar, 2.30-3pm

Settlers Spotlight

Find out about the latest research in an afternoon talk based on themes explored in the Settlers exhibition.

Thu 19 Apr, 7-9pm

Genetic Lines

An evening of music and science. Listen to musicians' responses to researchers from the Wellcome Centre for Human Genetics as they discuss their lives and work.

Book at: www.bit.ly/mnhevents

Sat 21 Apr, 2.30-3pm

Settlers Spotlight

Find out about the latest research in an afternoon talk based on themes explored in the Settlers exhibition.

Thu 26 Apr, 6.30-8.30pm

The Origins of Music

Introduced by Oxford anthropologist Iain Morley and film makers, Daniel B. Arvizu and Shenny Madrigal. This beautiful film explores the evolution of our musical capabilities, their relation to other animal species, and their influence on shaping humankind.

Book at: www.bit.ly/mnhevents

Thu 3 May, 6.30-8pm

Our Genomic Future

A discussion and preview of an innovative theatre project that explores the role of genomics and big data in medicine and healthcare.

Book at: www.bit.ly/mnhevents

Wed 9 May, 6.30-7.30pm

The Messy Story of Human Origins

Beyond our African origins, little is yet known about the emergence of our species. Dr Eleanor Scerri will present all the latest data and theories and show how the story of human origins is full of unexpected twists.

Book at: www.bit.ly/mnhevents

Thu 10 May, 11am-12pm

Sensing Culture

A hands-on tour of the Settlers exhibition for blind and partially-sighted visitors. Part of our Heritage Lottery-funded project with the RNIB. **To book email:**

outreach@museums.ox.ac.uk

Thu 10 May, 7-10pm

Settle in...for a Games Night

Join us for a night of exploration and settlement board games under the dinosaurs, with expert help from the Thirsty Meeples games café. Age 18+ **£7**

Book at: www.bit.ly/mnh tickets

Mon 14 May, 7pm

Pint of Science

Come hear about research related to Settlers in the more informal surroundings of the House Bar, where you'll hear from researchers and take part in some activities! House Bar, Blue Boar St.

Book at: www.pintofscience.co.uk/events/oxford

Fri 18 May, 7-10pm

Museums Late

Take torchlight trips and global adventures through music, talks, research and science across the Museum, and in the Pitt Rivers.

Book at: www.bit.ly/mnhevents

Tue 22 May, 6.30-7.30pm

The Genetic Legacy of Kings and Commoners in the Iberian Peninsula

The DNA of people living today holds clues to the demographic history of their ancestors. Dr Clare Bycroft will present recent work looking at the genetic history of the Iberian Peninsula.

Book at: www.bit.ly/mnhevents

Thu 7 June, 6.30-7.30pm

The Peopling of the British Isles: What we can learn from Genetics

Professor Peter Donnelly explains how large-scale genetic studies offer a powerful new approach to understanding subtle similarities and differences in populations and their history.

Book at: www.bit.ly/mnhevents

Wed 13 Jun, 6.30-7.30pm

Archaeology and the Peopling of the British Isles

Professor Mark Robinson tells us about the archaeological and environmental background of the Settlers exhibition, covering the footprints of the earliest known human colonists over 800,000 years ago to the Norman conquest.

Book at: www.bit.ly/mnhevents

Thu 29 June, 7.30-9pm

The Great Debate

'Getting Your Genome Sequenced; Will You Open Pandora's Box?'

To commemorate the anniversary of the 'Great Debate' on evolution in 1860 join our panel of experts to debate another scientific issue with huge implications for society, the personal genomics revolution.

Book at: www.bit.ly/mnhevents

Wed 3 Jul, 6.30-7.30pm

Genetics, Geography and Human History

Associate Professor Stephen Leslie discusses the findings from the People of the British Isles study; the first detailed analysis of very fine-scale genetic differences within the population of Britain.

Book at: www.bit.ly/mnhevents

Sat 8 Sep, 10am - 4pm

Settlers Archaeology Day School

Join Professor Mark Robinson, for a practical day school on using biological remains to understand Britain's past climates and peoples through archaeology from preservation of specimens to their interpretation. **£65**

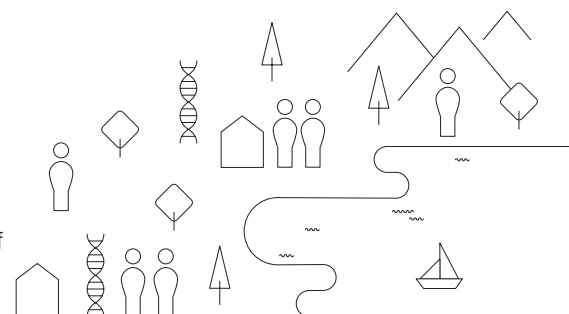
Book at: www.bit.ly/mnh tickets

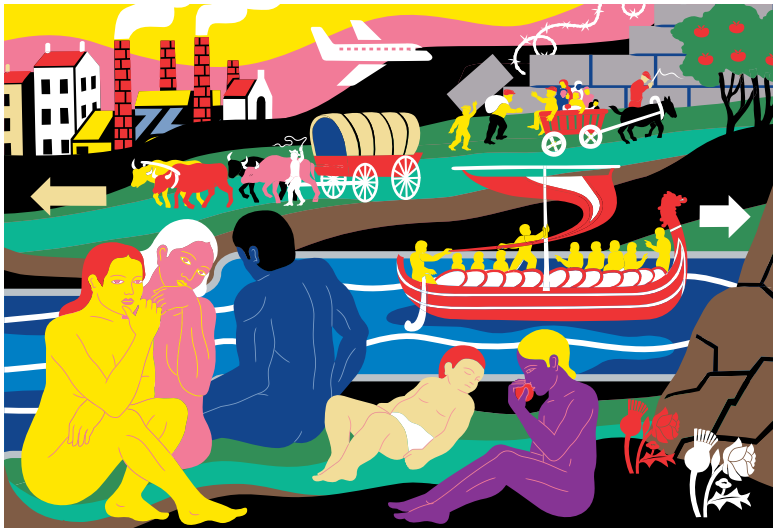
Thu 13 Sep, 10am - 3pm

Geography Study Day

A day of talks and activities aimed at A Level geography students but open to all. An opportunity to discuss with and hear from researchers about their current work.

To book email: education@oum.ox.ac.uk





Where Do We Come From? What Are We? Where Are We Going?

By Ian Kirkpatrick

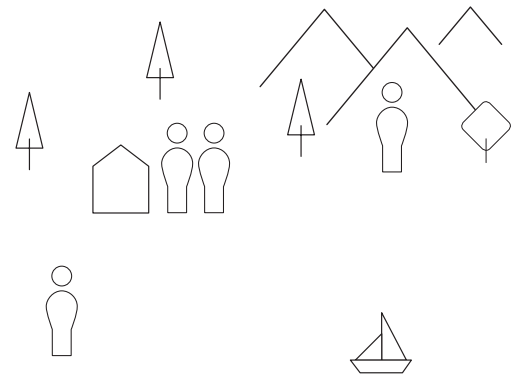
Specially commissioned artwork for the Settlers exhibition on display until 16 September.

The piece explores the social and natural causes behind human migration – both in ancient times and in the present day.

Stones and Bones of Early Britain Every Saturday from 24 March 11am-1pm



Find out about the first settlers in Britain by getting up close and hands-on with specimens from the museum's collections. Learn about the tools our ancestors used thousands of years ago, the different animals they shared the land with, and what Britain was like in the stone age.



Settlers Family Trail

Available everyday from 10 March

Pick up a special trail to guide you through the Settlers exhibition. Find out about where we came from, who were the first settlers in Britain and why people move.

The trails are available to pick up in the Settlers exhibition gallery on the first floor, or at the main desk. **Age 7+**

Oxford University Museum of Natural History

Parks Road, Oxford, OX1 3PW

Open daily from 10am-5pm. Admission is free.

01865 272950 | www.oum.ox.ac.uk

