

Grouping Animals

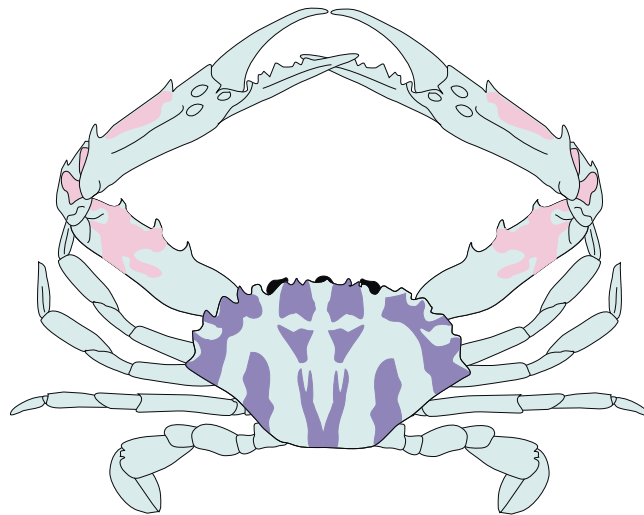
There are all sorts of animals on display in the Museum. Scientists classify animals according to their shared characteristics, grouping them into classes. Have a look at these animals and try and classify them into their different groups.

Does it have an endoskeleton or an exoskeleton?

Does it lay eggs, or give birth to live young?

What skin covering does it have - feathers, fur or scales?

Is it a bird, mammal, reptile, amphibian, fish or invertebrate?

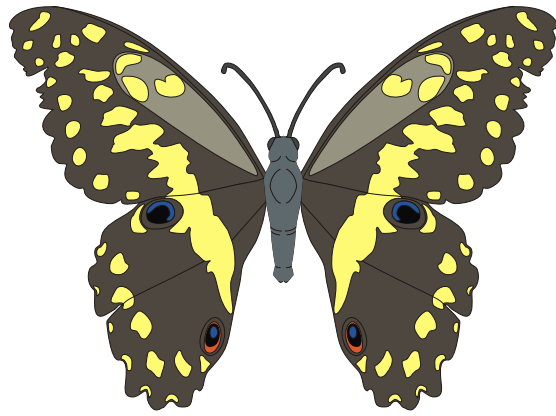


Swimmer crab

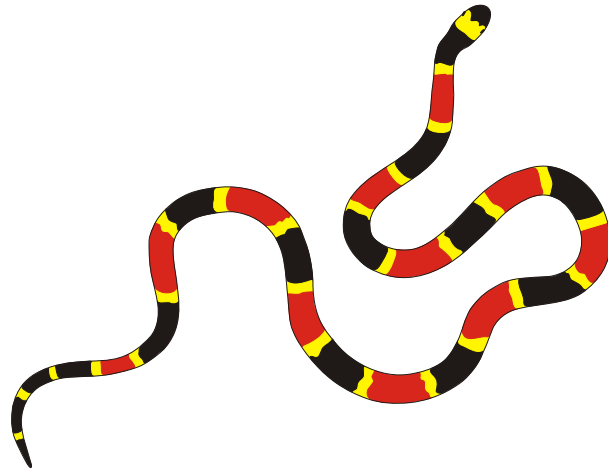


Koala

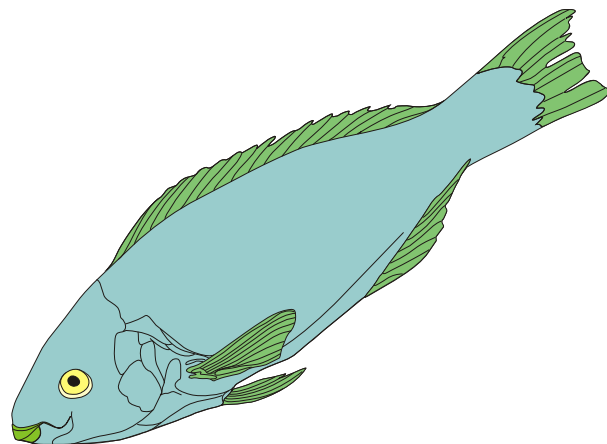
Butterfly



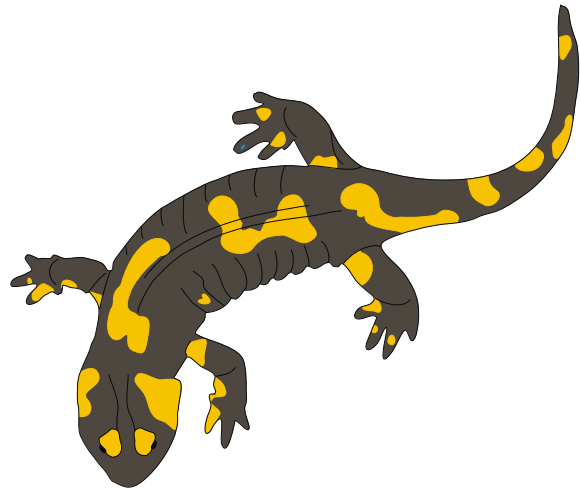
Coral snake



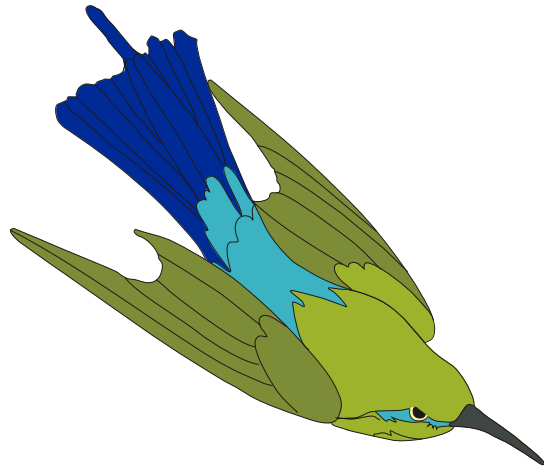
Parrot fish



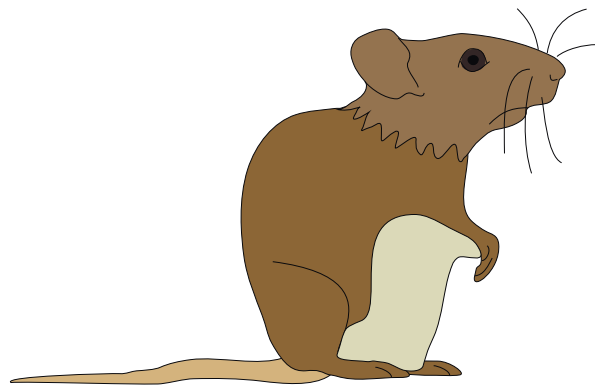
Fire salamander

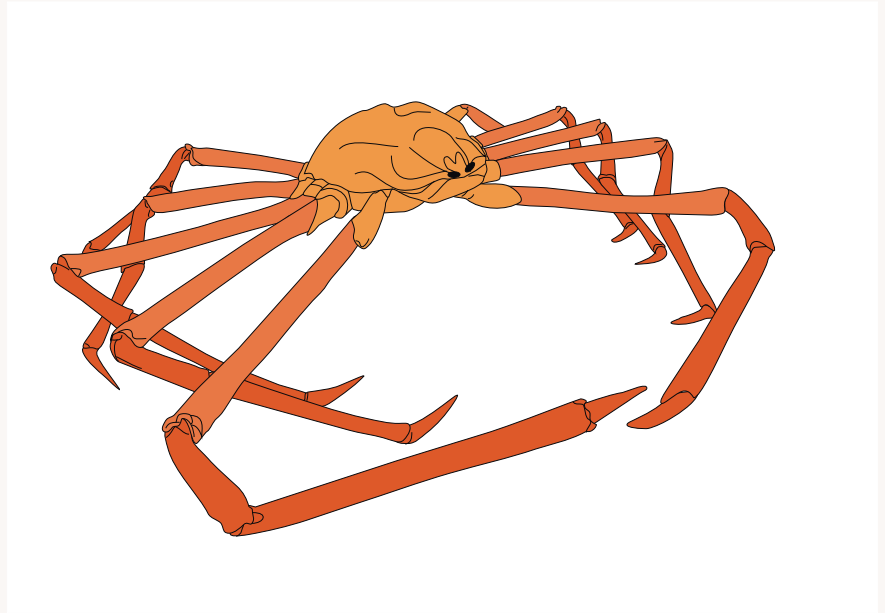


Australian
bee-eater



Yellow-necked
mouse





Spider crab

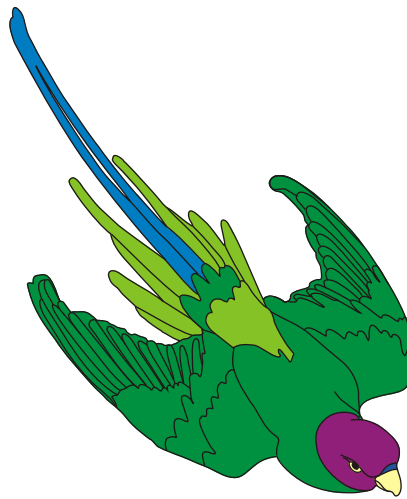


Nile crocodile

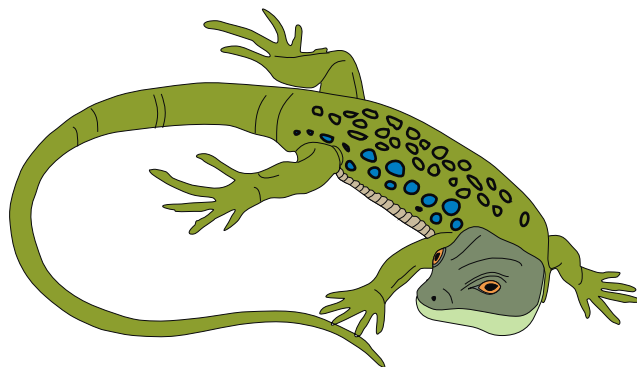


Chinchilla

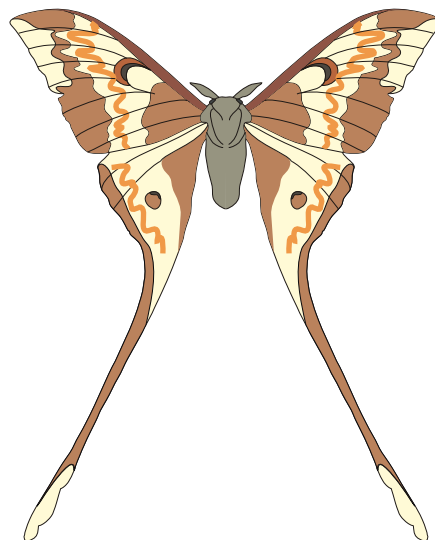
Plum-headed
parakeet



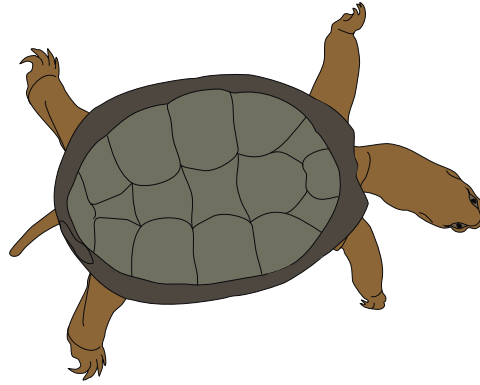
Ocellated lizard



Moon moth



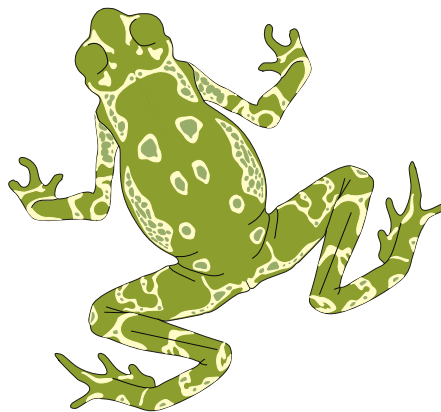
European pond
tortoise

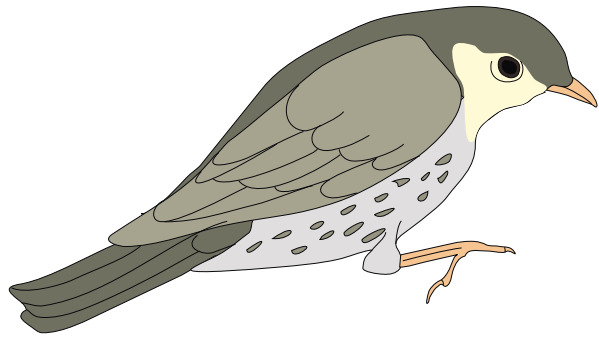


Red squirrel

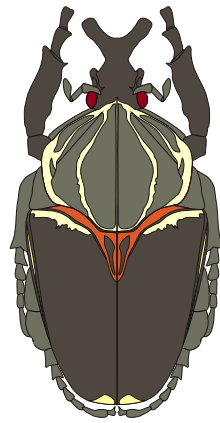


Yellow harlequin
toad





Song thrush

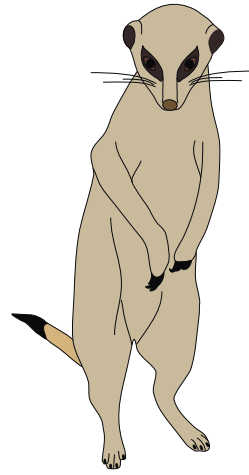


Goliath beetle

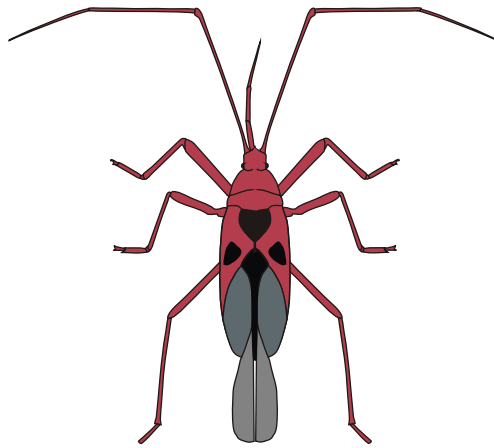


Red panda

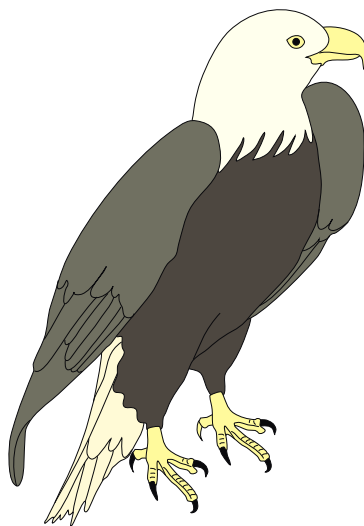
Meerkat



A bug



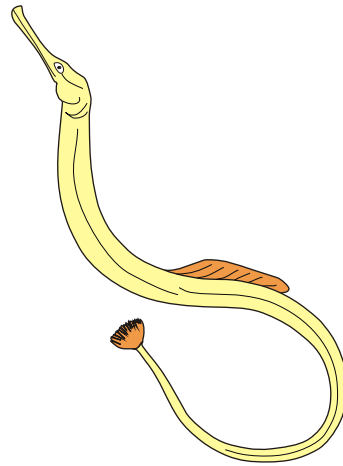
American bald eagle



Tasmanian devil



Great pipe fish



Dark handed gibbon

